



1096R



1736R



1236R



1580R

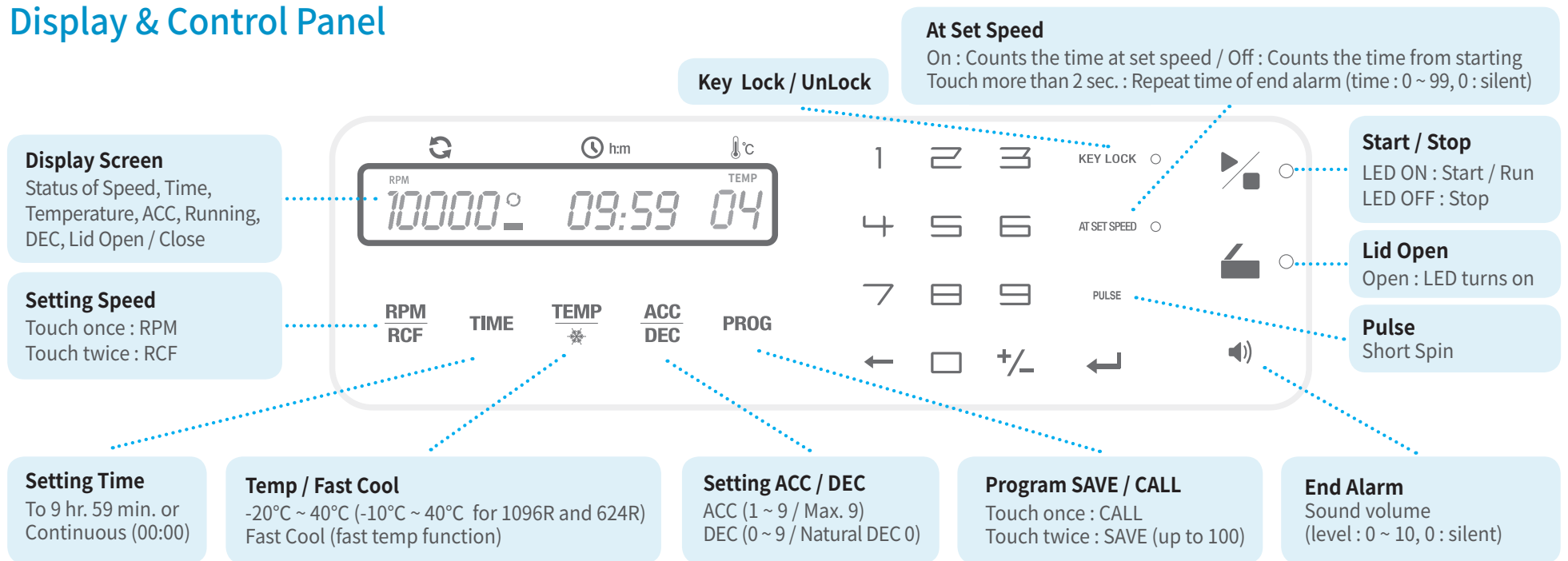


1248R



624R

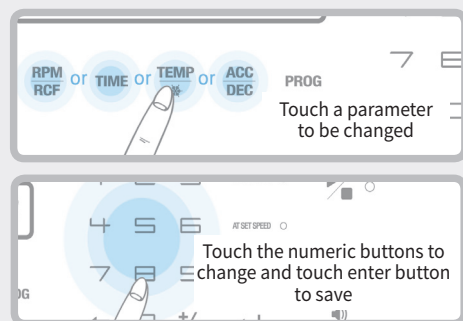
## Display & Control Panel



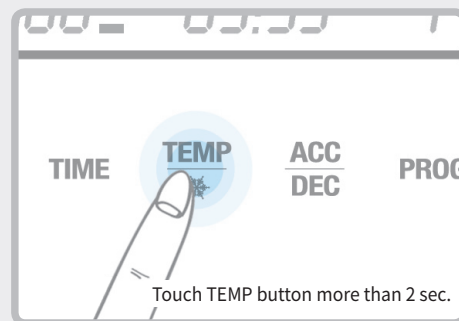
## Operation

Cat. No. GZ-1096R   Cat. No. GZ-1736R   Cat. No. GZ-1236R   Cat. No. GZ-1580R   Cat. No. GZ-1248R   Cat. No. GZ-0624R-B   Cat. No. GZ-0624R-W

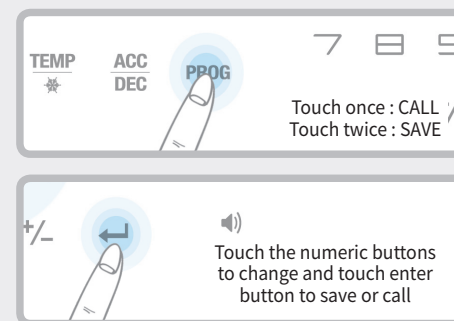
### Function Selection



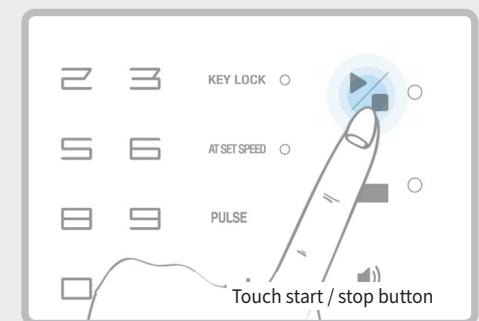
### Fast Cool (Quick Temperature Down)



### PROG Save / Call



### Start / Stop





1096R



1736R



1236R



1580R



1248R



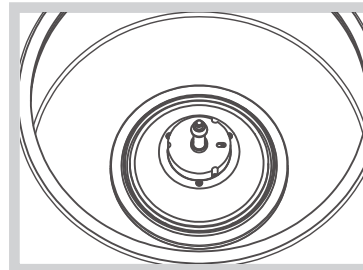
624R

### Precautions for Use



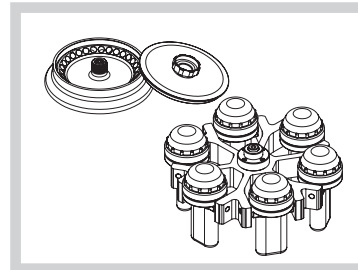
#### Balance for centrifuge & rotor

When centrifuge is installed, check the horizontality by a Bubble Leveler.



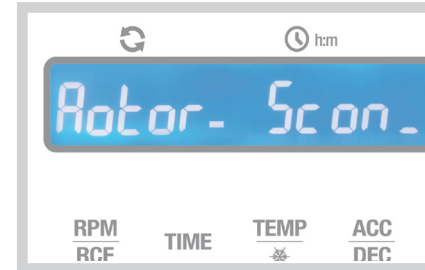
#### Chamber cleaning & checking

Clean the motor shaft. Remove the foreign substances not to cause any vibration.



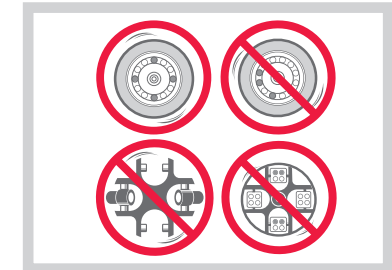
#### Checking accessories for damage

Inspect the rotor and accessories for damage before each use. Discontinue use and replace it if damaged.



#### Automatic rotor identification

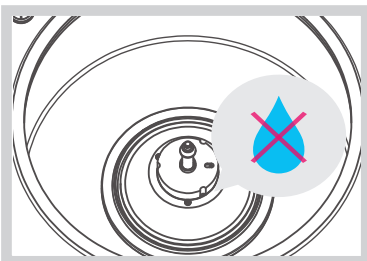
If a rotor is absent and power is supplied, "Rotor Scan" → "Error 9" will be appeared. This message will be cleared after rotor coupling and lid closing.



#### Balancing the rotor

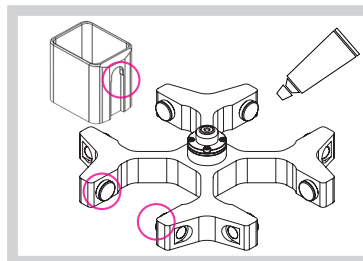
Load the sample symmetrically.

### Maintenance Tips



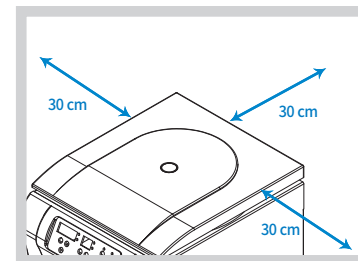
#### Keep the lid open after every use

Keep the centrifuge dry after use for prolonged durability. Take the rotor out and clean the shaft with the dry soft cloth.



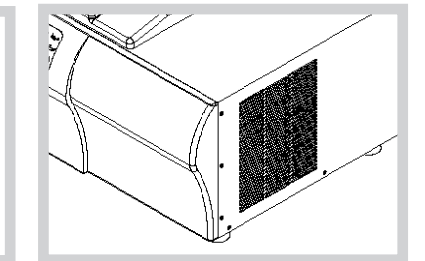
#### Lubricate the contact area

Clean rotor pivots and bucket grooves. Lubricate them by coating the grease sometimes to swing the buckets enough.



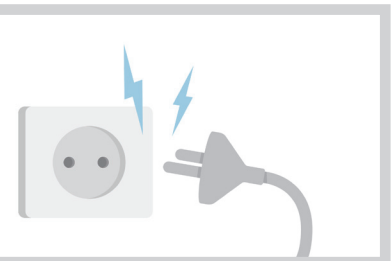
#### Secure a safety zone or 30 cm around centrifuge

Position the centrifuge with enough space (30 cm) on each side of centrifuge to ensure proper air circulation and safety zone.



#### Check ventilation slits regularly

Make sure that there is no dirt/dust on the ventilation slits of the device, and remove it if any.



#### Electrical safety

Use the power cord supplied with the device and connect the device to the power supplies that match the electrical requirements. Switch off the device and disconnect the power plug after using the centrifuge.